



# NH01LgG(-B) 1140V AC 50A-160A

Class of Operation: gG

保护特性: gG

Standard/ 标准: IEC 60269.1, GB/T 13539.1

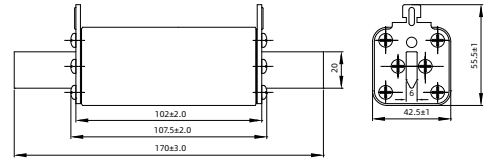
### INTERRUPTING CAPACITY / 分断能力:

100,000 A at 1140V AC

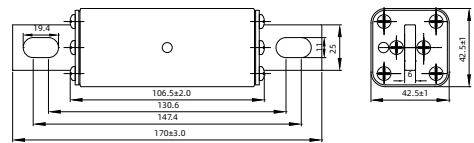
### Dimensions/ 尺寸:

Unit 单位: mm

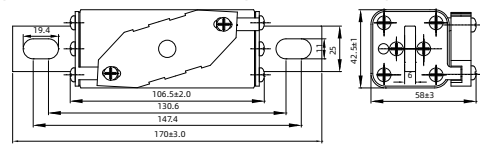
Type: NH01LgG Part No.: NH01LgG (amp rating) U11A



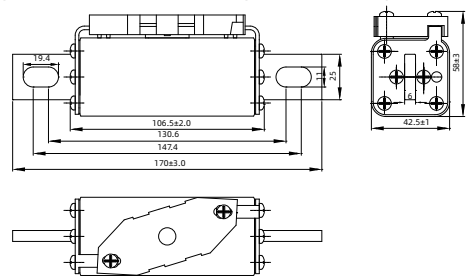
Type: NH01LgG-B Part No.: NH01LgG (amp rating) U11B



Type: NH01LgG-B Part No.: NH01LgG (amp rating) U11BC



Type: NH01LgG-B Part No.: NH01LgG (amp rating) U11BD



### TECHNICAL PARAMETERS/ 技术参数:

PART NO. 目录编号	CURRENT RATING 额定电流	SAFETY APPROVALS 安全认证	
		CCC	
NH01LgG50U11A NH01LgG50U11B NH01LgG50U11BC NH01LgG50U11BD	50A	○	○
NH01LgG63U11A NH01LgG63U11B NH01LgG63U11BC NH01LgG63U11BD	63A	○	○
NH01LgG80U11A NH01LgG80U11B NH01LgG80U11BC NH01LgG80U11BD	80A	○	○
NH01LgG100U11A NH01LgG100U11B NH01LgG100U11BC NH01LgG100U11BD	100A	○	○
NH01LgG125U11A NH01LgG125U11B NH01LgG125U11BC NH01LgG125U11BD	125A	○	○
NH01LgG160U11A NH01LgG160U11B NH01LgG160U11BC NH01LgG160U11BD	160A	○	○

U11DENOTES FOR 1140V AC

U11 表示 1140V AC

● DENOTES FOR APPROVAL

● 表示已取得安全认证

○ DENOTES FOR PENDING

○ 表示正在申请安全认证

### ELECTRICAL CHARACTERISTICS/ 电气特性:

Rated Current In(A) 额定电流 In(A)	CONVENTIONAL TIME(H) 约定时间	CONVENTIONAL CURRENT 约定电流	
		CONVENTIONAL NON-FUSING CURRENT(A) 约定不熔断电流	CONVENTIONAL FUSING CURRENT(A) 约定熔断电流
In ≤ 63	1	1.25In	1.6In
63 < In ≤ 160	2		

### NH01LgG 平均 I-T 曲线图 (仅供参考)

AVERAGE I-T CHARACTERISTICS CURVE  
(FOR REFERENCE)

